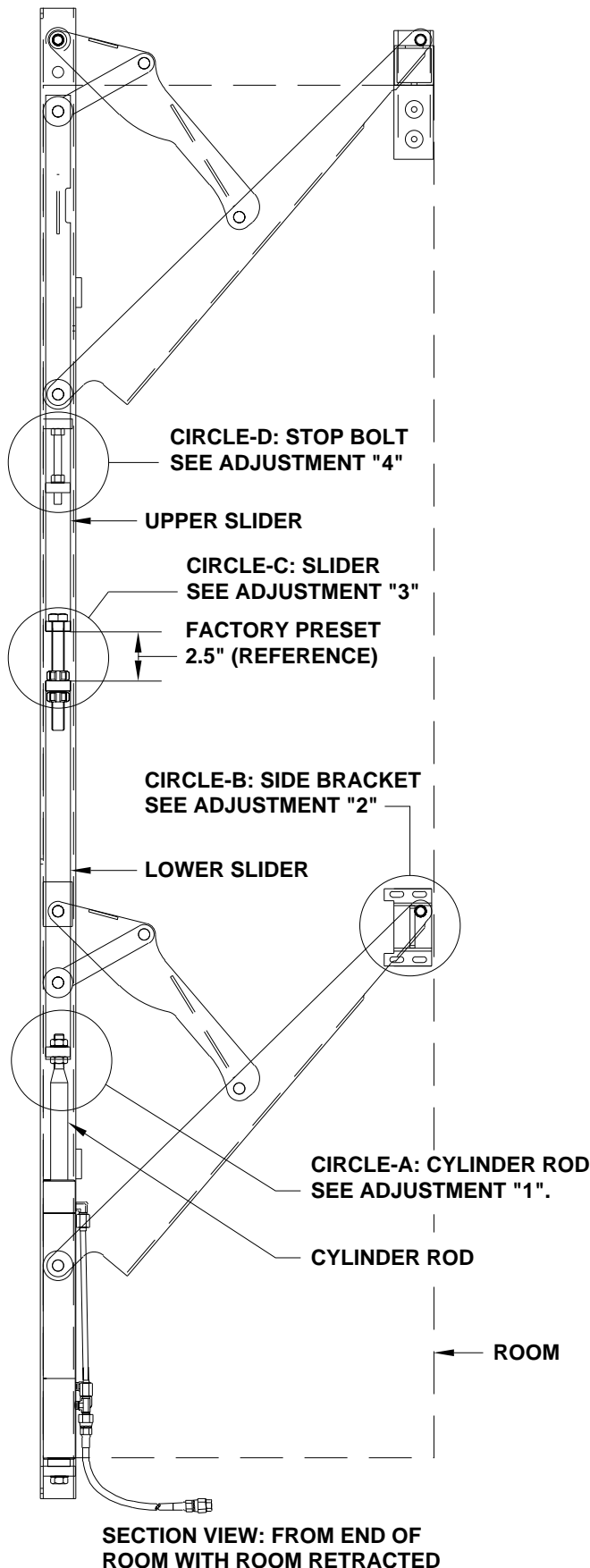


ROOM SEAL ADJUSTMENT INSTRUCTIONS

The HWH SpaceMaker®: Dual Cylinder "LATERAL ARM" Room Extension



This sheet deals with the adjustment procedures for the room mechanism. Changing one adjustment may cause a different problem with the room. The vehicle manufacturer should be contacted prior to making adjustments.

If the room is operating erratically or there is a problem with the room mechanism, contact HWH Customer Service before servicing the room extension.

NOTE: With the room EXTENDED or RETRACTED, if the room sealing surface exceeds 0.5" gap from top to bottom or 1.0" gap from front to rear of achieving seal the mechanism adjustments will not compensate. Contact the vehicle manufacturer.

ADJUSTMENTS

1. Problem - With the room extended both top and bottom do not seal: If gap between sealing surfaces is equal from top to bottom a CYLINDER ROD ADJUSTMENT is needed (See Circle A). Adjust both front and rear ROD assemblies as needed for a seal from top to bottom on both front and rear surfaces.

If the gap is not equal from top to bottom attempt to equalize the gap by adjusting the SIDE BRACKETS (See Circle B) before making a CYLINDER ROD ADJUSTMENT.

2. Problem - With the room extended the bottom of the room does not seal: First adjust the front or rear SIDE BRACKETS (See Circle B) as needed to close the mating surface gap. Close the gap as much as this adjustment will allow for. If a gap is still present a SLIDER ADJUSTMENT is needed (See Circle C). Increase the gap between the upper and lower sliders in 1/8" increments and re-test DO NOT exceed the factory preset gap by more than 1/4" wider or narrower, contact HWH Customer Service.

3. Problem - With the room extended the top of the room does not seal: A SLIDER ADJUSTMENT is needed (See Circle C). Decrease the gap between the upper and lower sliders in 1/8" increments and re-test. DO NOT exceed the factory preset gap by more than 1/4" wider or narrower, contact HWH Customer Service.

4. Problem - With the room retracted bottom, top or both do not seal: A STOP BOLT ADJUSTMENT is needed (See Circle D). Check and adjust as necessary.

5. Problem - The room needs a vertical adjustment: This requires the remounting of the Lateral Arm mechanism. Contact the vehicle manufacturer before proceeding.