



HYDRAULIC LINE CONNECTION DIAGRAMS

HWH® SPACEMAKER® SLIDE-OUT SYSTEMS

FEATURING:

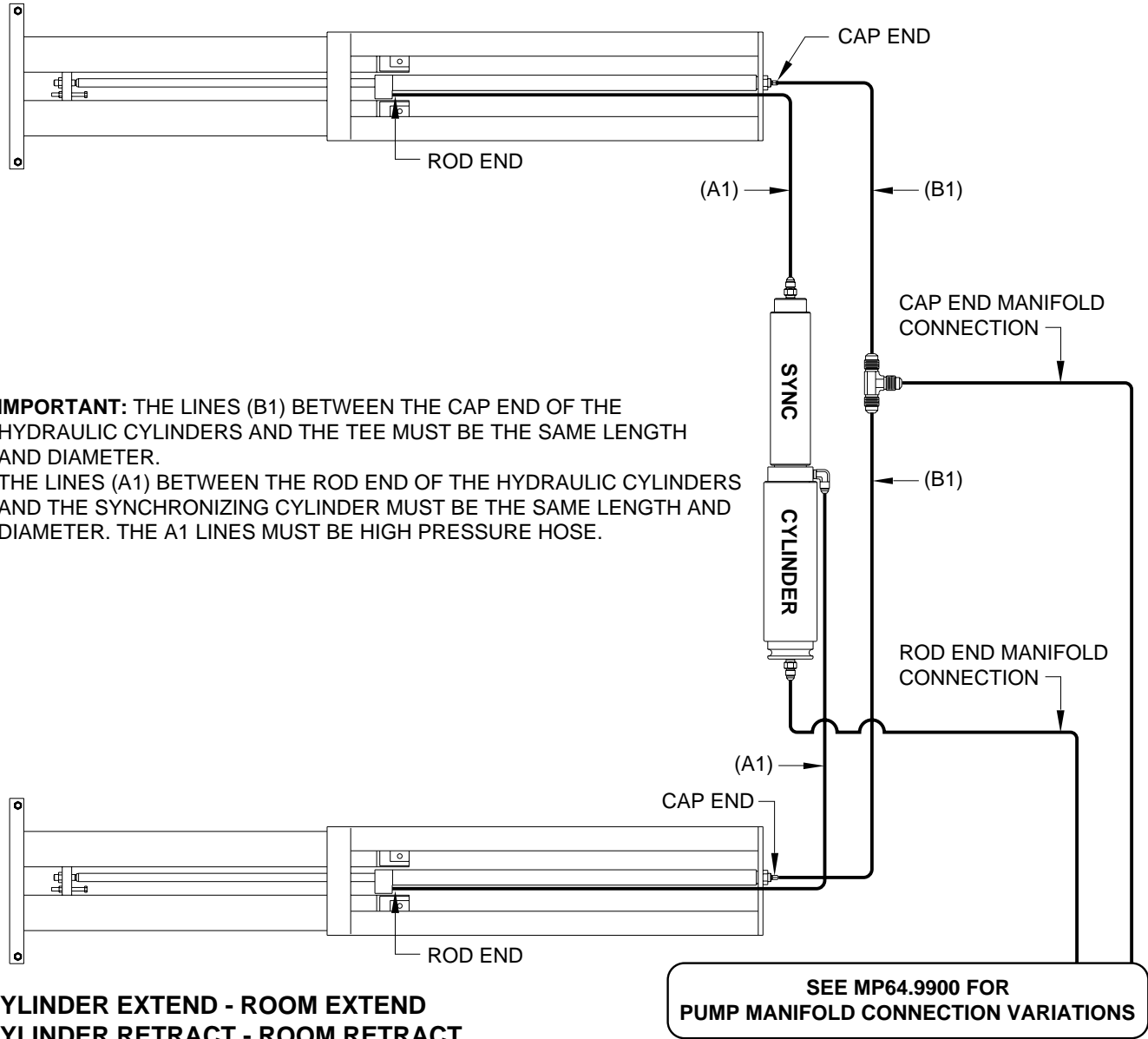
*Dual-Cylinder "In Floor" Slide-Out System
Single-Cylinder "In Floor" Slide-Out System*

HWH CORPORATION
(On I-80, Exit 267 South)
2096 Moscow Road | Moscow, Iowa 52760
Ph: 800/321-3494 (or) 563/724-3396 | Fax: 563/724-3408
www.hwh.com

**ML50390/MP04.9800D
20JUN12**

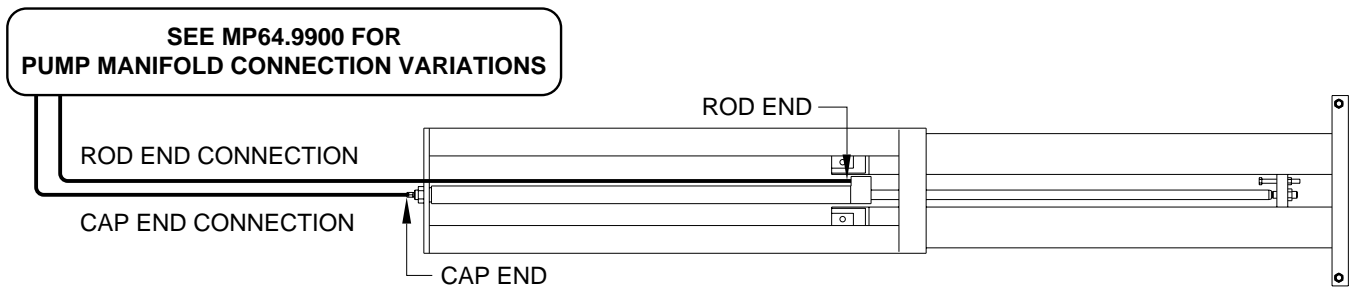
GENERIC HYDRAULIC LINE CONNECTION DIAGRAM DUAL CYLINDER "IN FLOOR" ROOM EXTENSION (WITH SYNCHRONIZING CYLINDER) SINGLE CYLINDER "IN FLOOR" ROOM EXTENSION

DUAL CYLINDER "IN FLOOR" ROOM EXTENSION (WITH SYNCHRONIZING CYLINDER)



**CYLINDER EXTEND - ROOM EXTEND
CYLINDER RETRACT - ROOM RETRACT**

SINGLE CYLINDER "IN FLOOR" ROOM EXTENSION

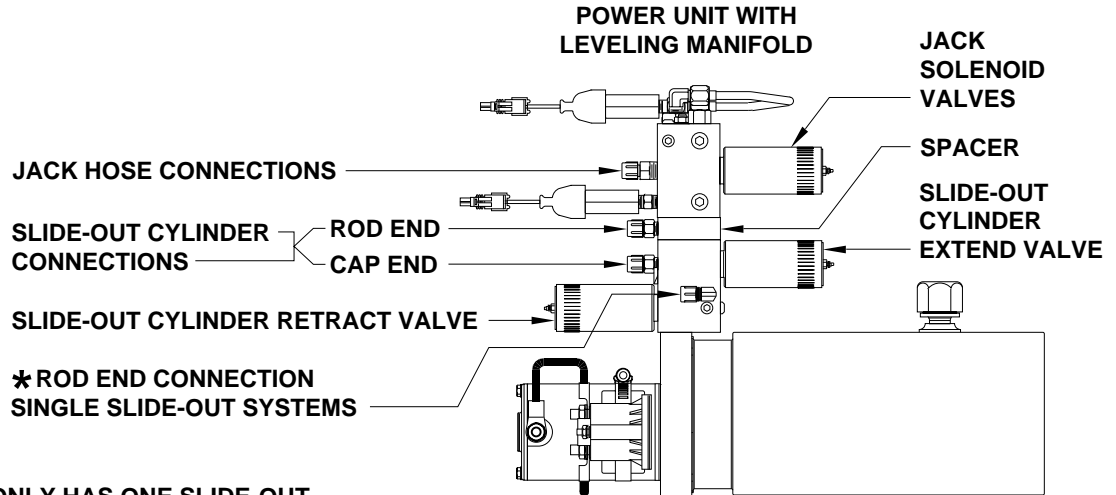


**CYLINDER EXTEND - ROOM EXTEND
CYLINDER RETRACT - ROOM RETRACT**

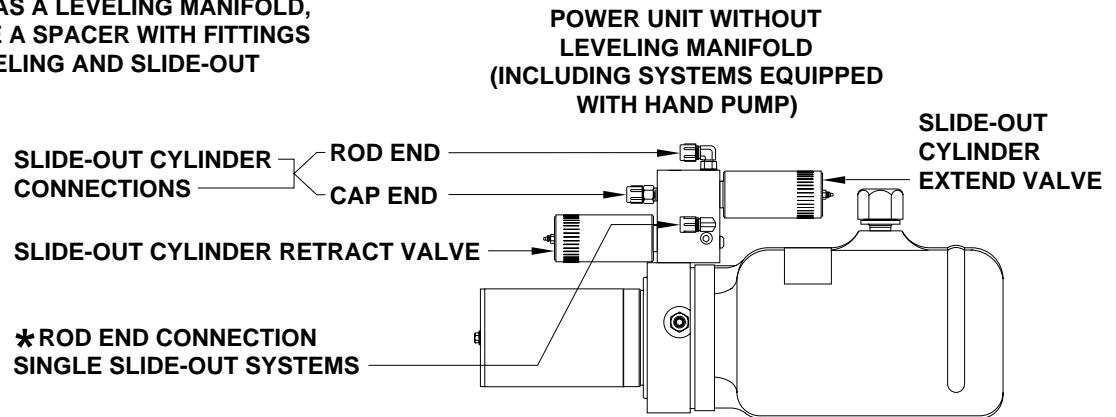
HYDRAULIC LINE CONNECTION DIAGRAM

SLIDE-OUT LINE CONNECTIONS AT THE MANIFOLD

ALL HWH SLIDE-OUT MECHANISMS



* IF THE VEHICLE ONLY HAS ONE SLIDE-OUT AND THE MANIFOLD IS NOT EQUIPPED WITH AN AUXILIARY HAND PUMP, THE ROD END HOSE CONNECTION MAY BE AT A FITTING THAT IS ON EITHER END OF THE SLIDE-OUT MANIFOLD. IF THE POWER UNIT HAS A LEVELING MANIFOLD, THERE WILL NOT BE A SPACER WITH FITTINGS BETWEEN THE LEVELING AND SLIDE-OUT MANIFOLDS.

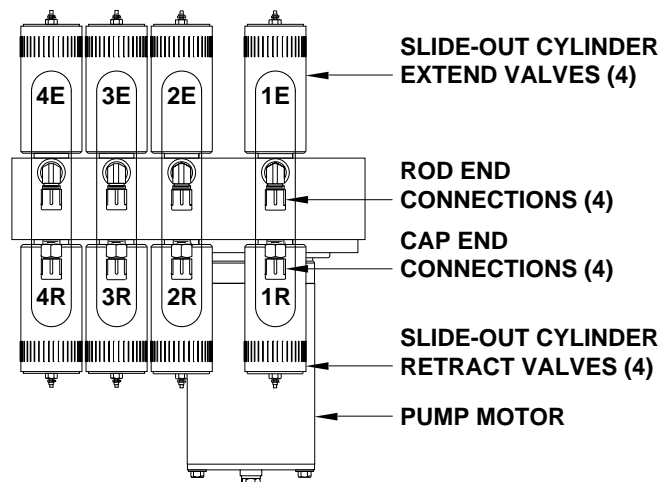


HOSE CONNECTIONS AT THE MANIFOLD ARE CRITICAL. IMPROPER HOSE ROUTING WILL CAUSE INCORRECT SLIDE-OUT FUNCTION AND CAN CAUSE SEVERE DAMAGE TO SLIDE-OUT CYLINDERS OR SOLENOID VALVES. IF A ROD AND CAP END HOSE ARE REVERSED FOR A SLIDE-OUT, THE SLIDE-OUT CYLINDER(S) WILL EXTEND BUT NOT RETRACT.

THE ROD AND CAP HOSES MUST GO TO THE CORRECT FITTINGS IN LINE WITH THE CORRECT EXTEND AND RETRACT VALVES FOR THE SLIDE-OUT. IF THE ROD END OR CAP END HOSES FOR TWO SLIDE-OUTS ARE SWAPPED, EXTREME PRESSURE WILL DAMAGE THE SOLENOID VALVES OR SLIDE-OUT CYLINDERS.

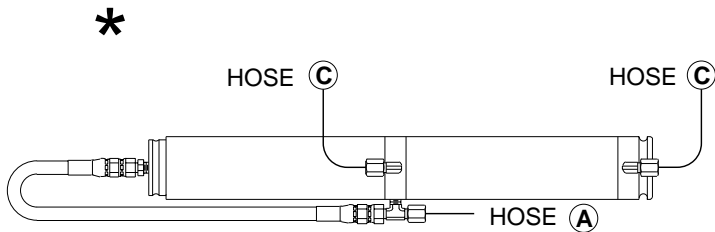
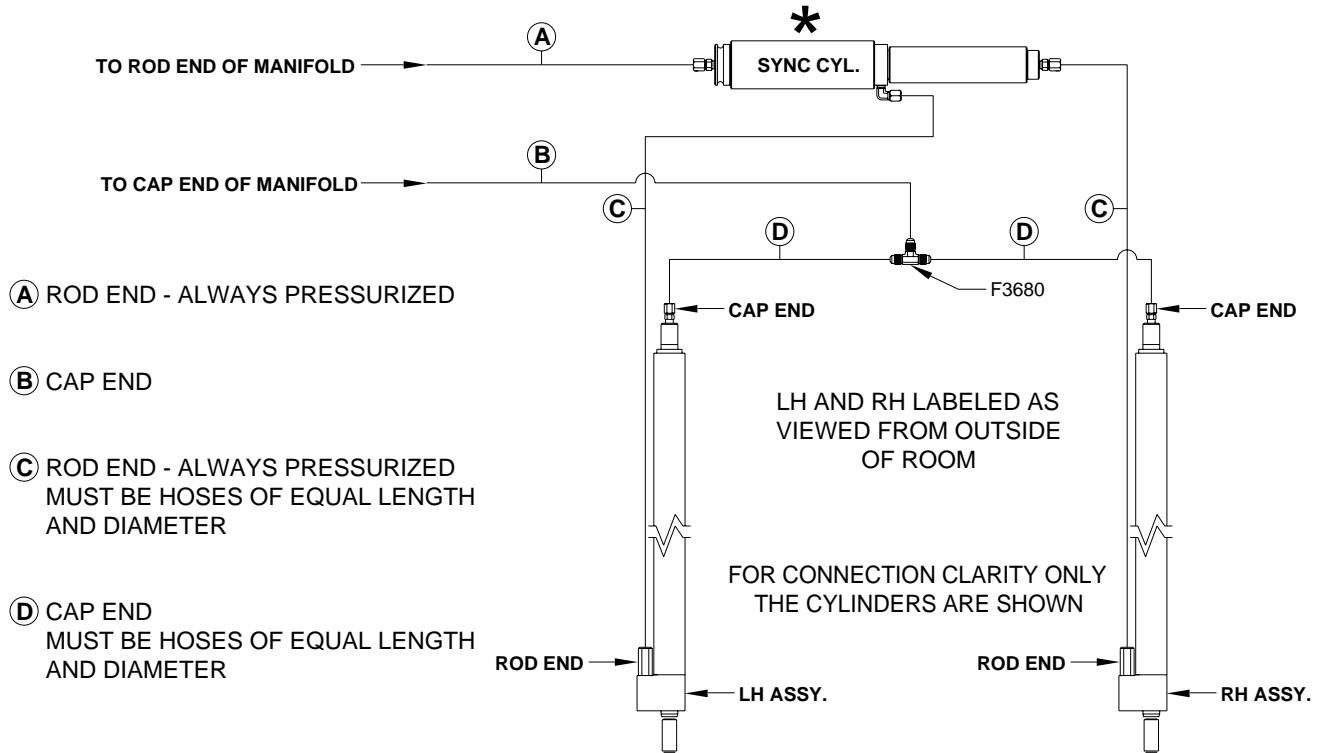
CONNECTION INFORMATION ON THIS PAGE IS THE SAME FOR SYSTEMS EQUIPPED WITH AUXILIARY HAND PUMPS OR REMOTE SLIDE-OUT MANIFOLDS.

TOP VIEW OF 4 SLIDE-OUT MANIFOLD



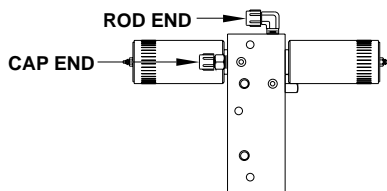
HYDRAULIC LINE CONNECTION DIAGRAM

GENERIC DIAGRAM FOR DUAL CYLINDER SLIDE-OUT

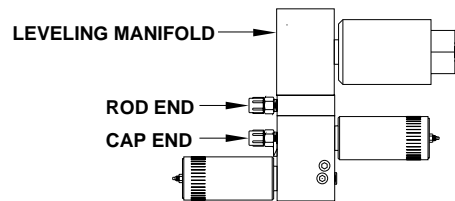


SOME 2 CYLINDER SLIDE OUT SYSTEMS WILL USE THIS LARGER DIAMETER SYNC CYLINDER. CONNECT HOSES AS SHOWN HERE.

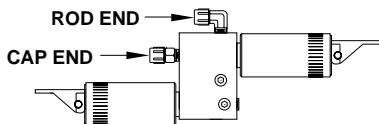
TOP VIEW
SINGLE SLIDE-OUT MANIFOLD



SIDE VIEW
MULTIPLE SLIDE-OUT MANIFOLD
WITH LEVELING MANIFOLD

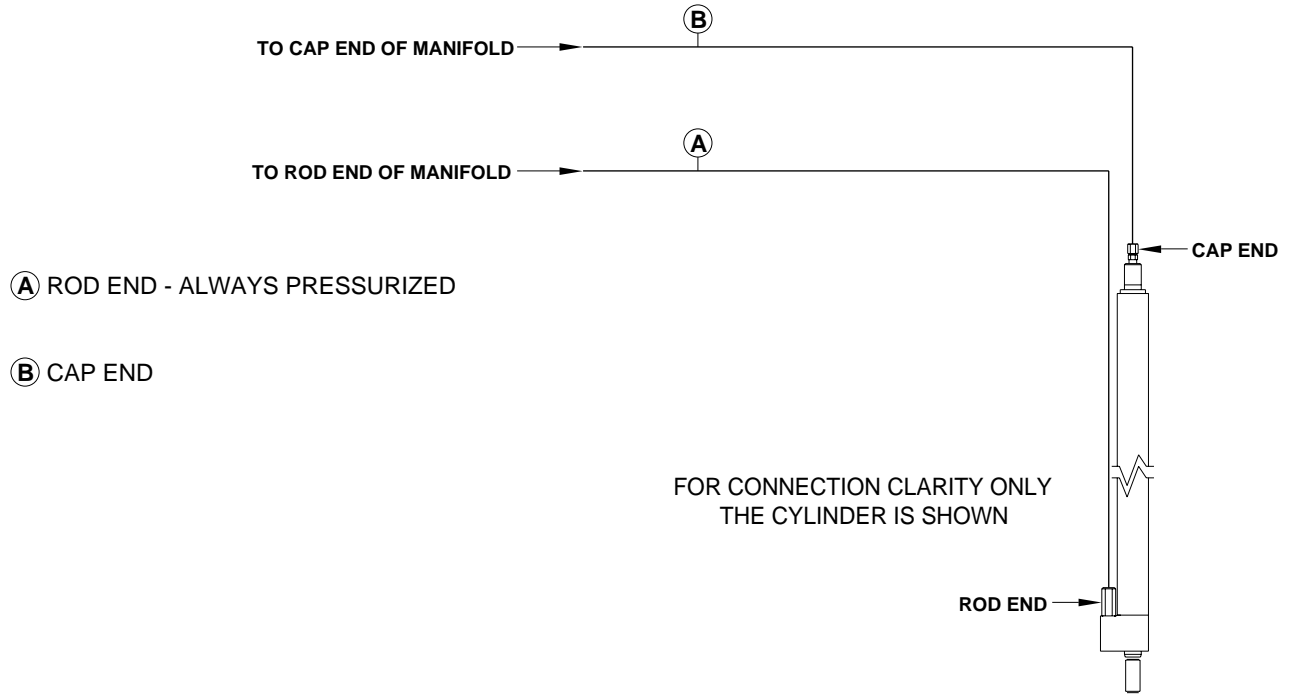


SIDE VIEW
REMOTE MANIFOLD OR SLIDE-OUT MANIFOLD
WITH NO LEVELING MANIFOLD OR
WITH AUXILIARY HAND PUMP

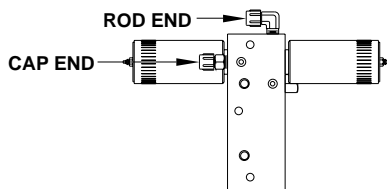


HYDRAULIC LINE CONNECTION DIAGRAM

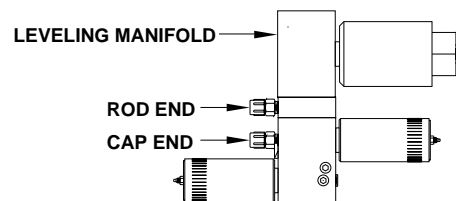
GENERIC DIAGRAM FOR SINGLE CYLINDER SLIDE-OUT



TOP VIEW
SINGLE SLIDE-OUT MANIFOLD



SIDE VIEW
MULTIPLE SLIDE-OUT MANIFOLD
WITH LEVELING MANIFOLD



SIDE VIEW
REMOTE MANIFOLD OR SLIDE-OUT MANIFOLD
WITH NO LEVELING MANIFOLD OR
WITH AUXILIARY HAND PUMP

